



HUZUR YACHTS[®]

SINCE 1978





Sektördeki 40 yıllık geçmişinin vermiş olduğu özgüven ve gururla üreten Huzur Tekne 1978 yılında Ali ÇELİK ve Mehmet YILDIRIM tarafından İstanbul Ayvansaray'da kurulmuştur. 1983 yılına gelindiğinde Tuzla Tersaneler Bölgesi'ne taşınarak faaliyetlerine devam etmiş, 2003 yılında ise Huzur Yat San. Tur. ve Tic. Ltd. Şti. olarak isim değişikliği yaşamıştır.

Huzur Yat Kuruluşundan günümüze 5 ila 15 metre arasında 100 ün üzerinde 15 ila 40 metre arasında ise 25 adet kişiye özel tekne imal etmiştir.

Huzur yat motorsailer, motor yat, power boat, gulet, trawler, ketch tipi yat dizaynı ve imalatı üzerinde yetişmiş deneyimli kadrosu ile müşterilerinin isteklerini, başarılı ve titiz bir işçilikle karşılamaktadır.

Bugüne kadar gerçekleştirmiş olduğu projelerde devamlı yaratıcı olan Huzur Yat; konfor, şıklık ve sağlamlıktan asla ödün vermemektedir.

Huzur Yat sıfır ve ikinci el tekne piyasasını da yakından takip etmenin verdiği bilgi birikim ve tecrübeyle müşterisine aynı zamanda yeni imal teknelerin fiyatlandırılması, tasarımı, imalat süresi ve iş takibi gibi konularda destek vermekte, teak ağaç döşeme işlerinin de üstesinden başarıyla gelmektedir.

Duyguları yoğun olarak harmanlayıp beklentileri en iyi şekilde karşılayan Huzur Yat, gerçekleştirdiği projeleri, gelecektekilerin teminatı olarak bizlere sunmaktadır.

Huzur Boat, which is manufacturing with the pride and esteem of it's 40 year history, was established in 1978 by Ali ÇELİK and Mehmet YILDIRIM in İstanbul Ayvansaray. It was moved to Tuzla Shipyards Area in 1983 and continued its activities in 2003 changing its name as Huzur Yat San. Tur. ve Tic. Ltd. Sti.

Up to now, Huzur Boat has built over 100 pcs of custom-built boats ranging from 5 to 15 meters and 25 pieces of custom-built boats between 15 and 40 meters.

Thanks to Huzur Boat's experienced team in the designs and production of motorsailer, motor yacht, powerboat, gulet, trawler, ketch type yacht design, Huzur Boat can meet the demands of customers with a successful and meticulous workmanship.

Huzur Boat, which has been continuously creative in the projects that it has realized until today, has never compromised on comfort, elegance and solidity.

Huzur Boats supports the customers in terms of pricing, designing, manufacturing time and job follow up of the newly manufactured boats, can successfully handle teakwood upholstery, thanks to the know-how and experience gained by closely following the zero and second hand boat market.

Huzur Boat, who intermingles the emotions intensively and optimally meets customer expectations, presents the projects realized to us as a guarantee of the future.

روضح قناسرت

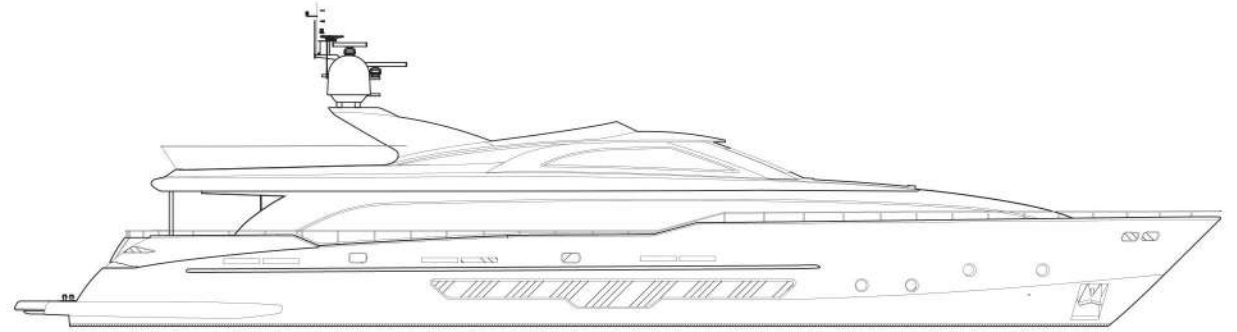
يف مردلي دمحمو كئيدج يلوع لبق نم 1978 داع، عاطقول يف قنيس 40 ىلا دتيمي يضام لال خ نم اهيلع لوصحمل رختالو قيثابل عجتنمل براوقلل روضح سىسات مت ىلا امس ريغت دقف 2003 داع يف امو، امتايلاعفو انتطشنأ يف ترمتساف لزوت يف نفسلا ءانب ضوا ح قطنم ىلا تلقتنا 1983 قنس تتأ امنيح . ياراسن افيا لوبنطسا قراجتلو ايح ايسلاو عانصلو تاتخيئل قنودحمل ايلوؤسمل تا ذ روضح كشرش ارتم 40 ىلا ارتم 15 نيب اميف اداعباً احوارتم ابراق 25، ارتم 15 ىلا ارتم 5 نيب اميف اداعباً حوارتمل براوق 100 نم رشكاً امس يسات ذنم تاتخيئل روضح كشرش تاجتن دقل صاخشال قصاخ.

،تخي روتومو، رليس روتوم عون نم تاتخيئل جاتن او ميحصت يف قربخل يذو بردمل ارداك عم عجانو ققيقد قلامعب ائلامعو انئابز تاابلط قيبلتب تاتخيئل روضح موقت شتالكو، ديص قنيسو، تيلوغو، قوقلا قروزو.

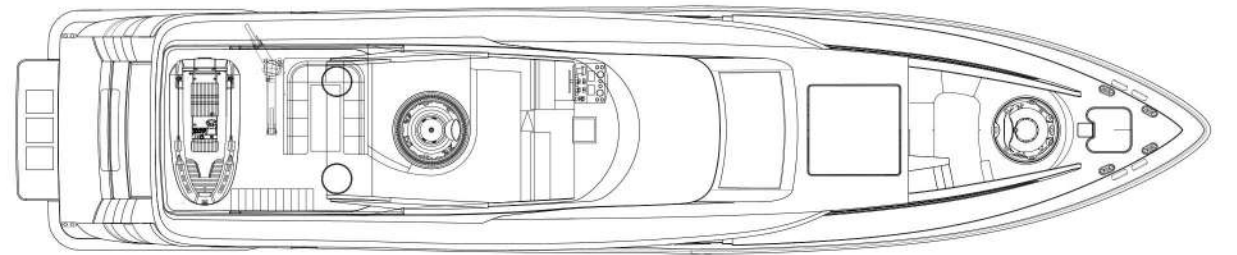
ادباً قمالسلاو، ققانالو، عجارلا نع؛ مويلا ىلا اذيفنتب تماق يتلا عيراشمل عيجم يف امئاد قركتبم تنك يتلا تاتخيئل روضح قسسؤم لزان تتع ال قفر عمل مكارتب كلذو لمعلا ععباتمو، اجاتن اقدمو، امي مصتو، قنديج عجتنمل براوقلا ري عست لشم عيضاوم يف انئابزل قدع اسمل مسفن تقولا يف تاتخيئل روضح كشرش مدقت حاجن لكب اضي اجاسل بشخ نم تايضرال لامع ىلع بلغت انامك، اضي امدختستملو قنديجل براوقلا عاطق ععباتم نم اهيلع لوصحمل قربخل او لكشال لصفاب تا عقتل قيبلمو، قفثكلم قروصب فطاو عالا عيجم لبق قنستمل نامضك امتققح يتلا عيراشمل مي دقتب تاتخيئل روضح كشرش موقت.



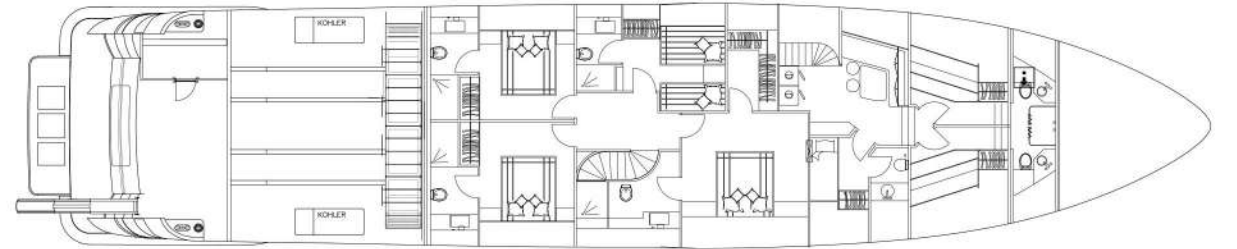
Built Year	2015
Model	Motor Yacht
Full Length	36 m.
Width	7,70 m.
Displacement	160 t.
Draft	1,75 m.
Fuel Capacity	16000 l.
Class	RINA
Water Capacity	3000 l.
Maximum Speed	16 knots
Generators	2x70 kva Köhler
Construction	Wooden Epoxy
Exterior Cons.	Teak
Interior Cons.	Oak / Anigra
Engines	2 x 1200 MAN
	Bow Thruster
	Stabilizer
	2 x Jakuzi
	2 x 3200 lrgat
	Living Room
	2 x Master Cabin
	VIP Cabin
	Owner Cabin
	Guest Cabin
	3 x crew Cabin
	Tender
	Jet ski
	Fly Bridge
	Pasarella



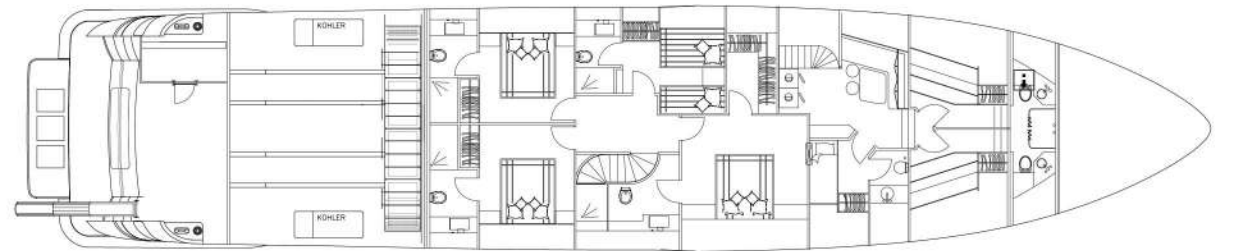
Profile



Upper Deck



Main Deck

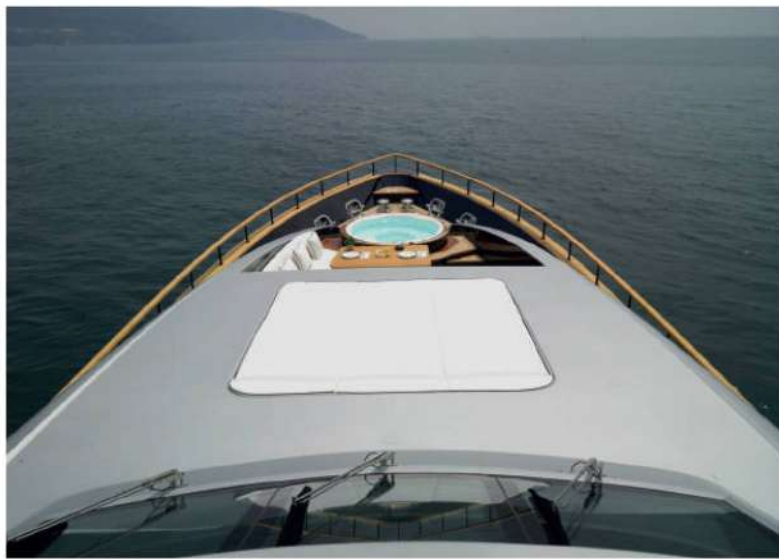


Cabin Deck





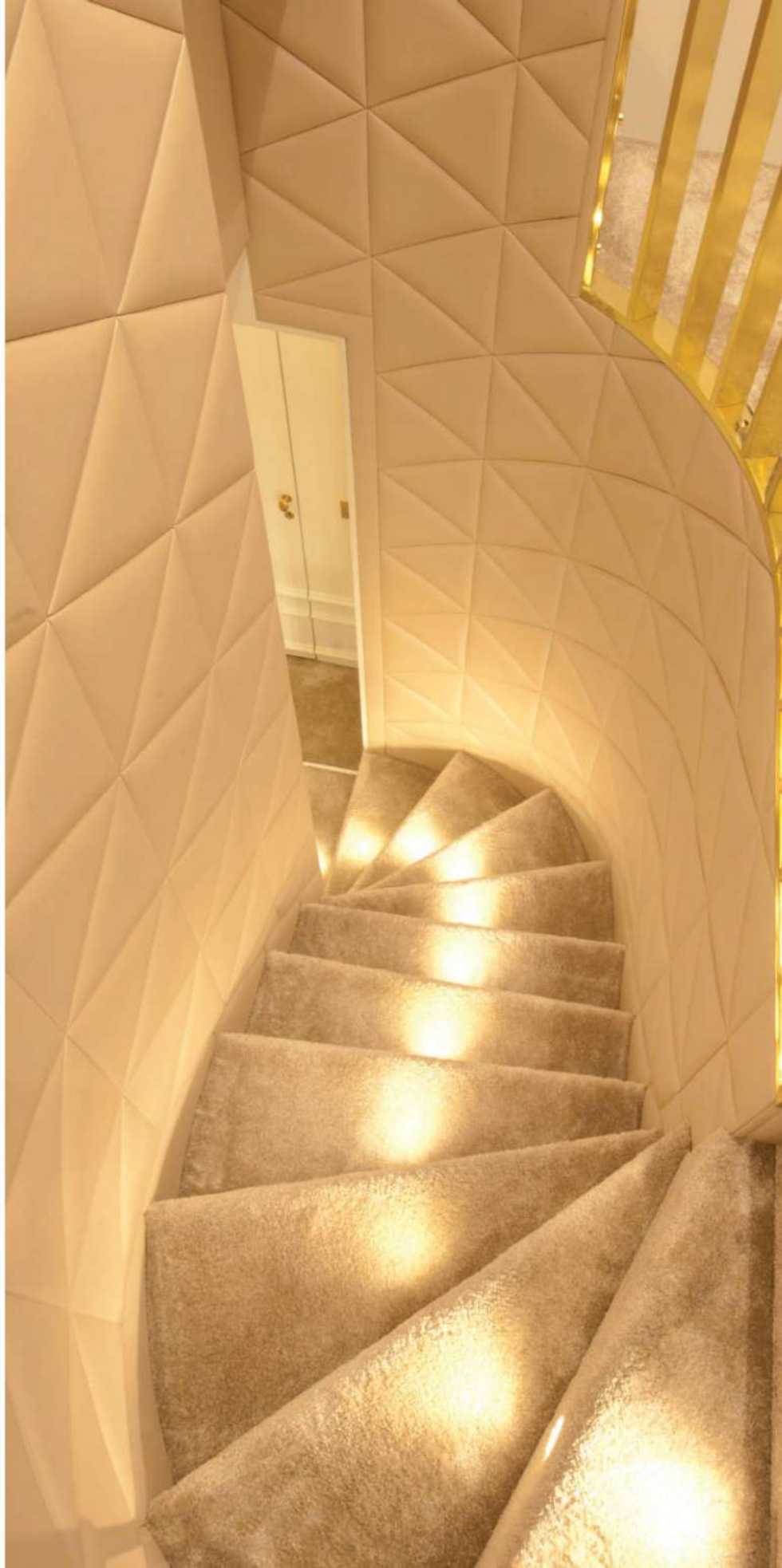








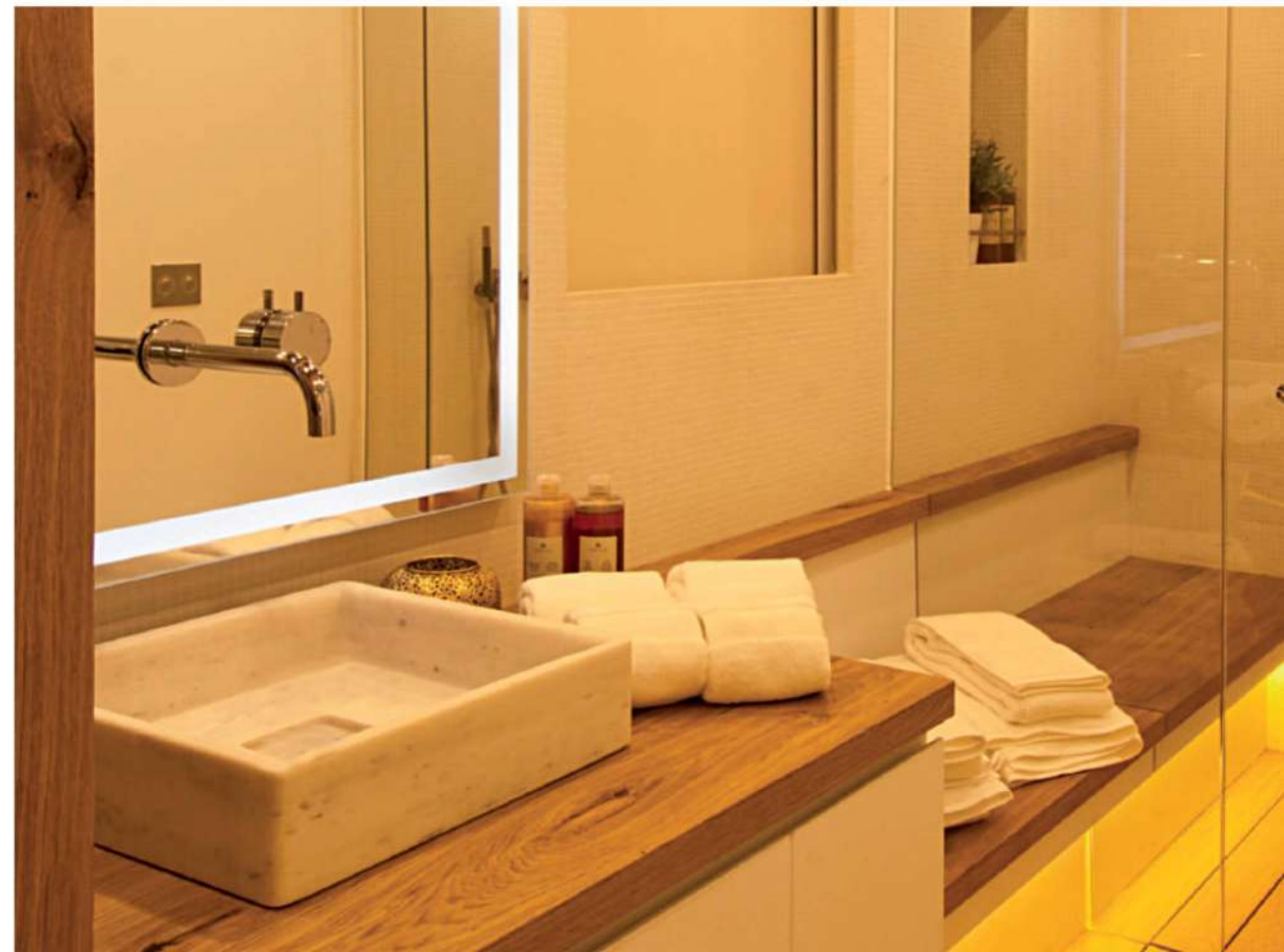
















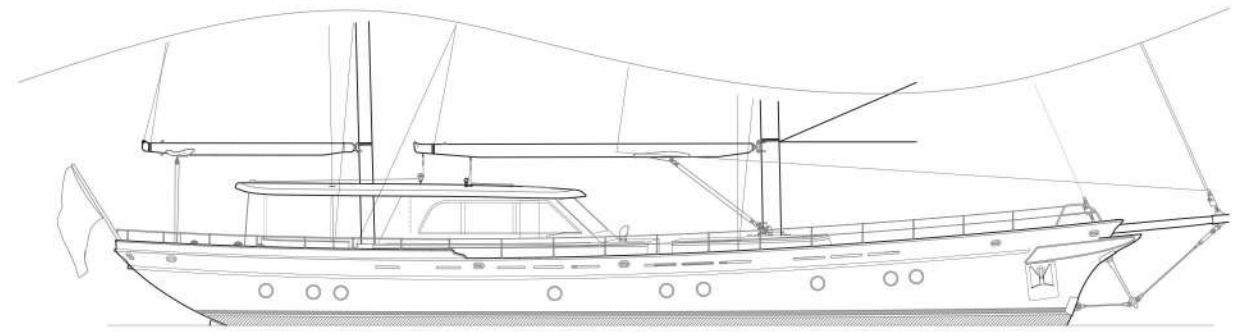




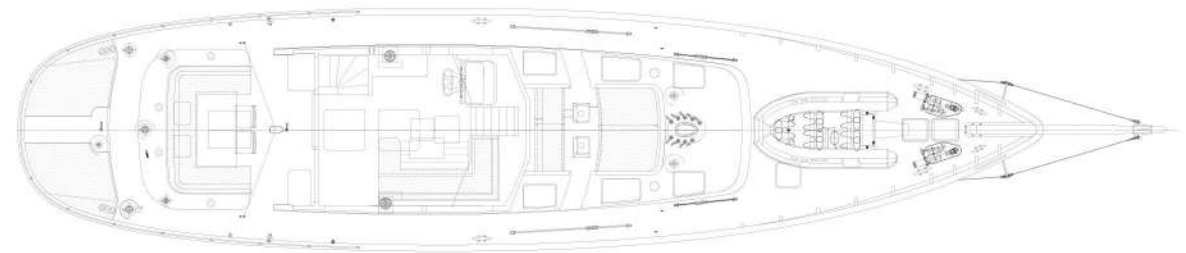




Built Year	2018
Model	Gulet
Full Length	30,30 m.
Width	6,40 m.
Displacement	84 t.
Draft	3 m.
Fuel Capacity	2800 l.
Class	RINA
Water Capacity	2000 l.
Maximum Speed	10 knots
Generators	Kohler 13.5 + 20.5 kW
Construction	Strip Plank+ Cold Molded Wood + Epoxy
Exterior Cons.	Teak
Interior Cons.	Oak
Engines	QSB 6.7, @2400rpm 300 HP
	Bow Thruster
	Living Room
	Master Cabin
	3 x Twin Cabin
	3 x Crew Cabin
	Tender
	Jet ski
	Winch
	Pasarella



Profile



Main Deck



Cabin Deck









40 M





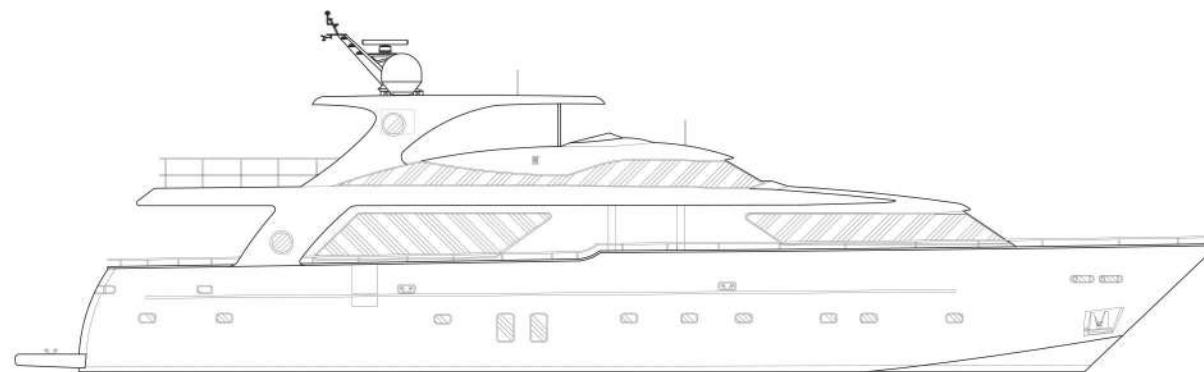
40 M



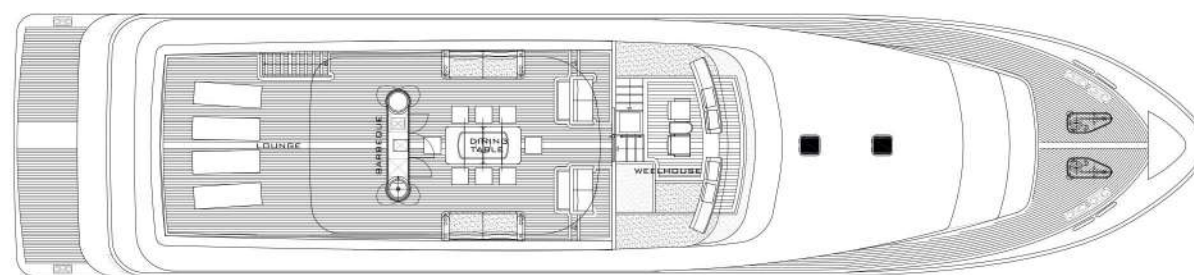


TRUE
STORY

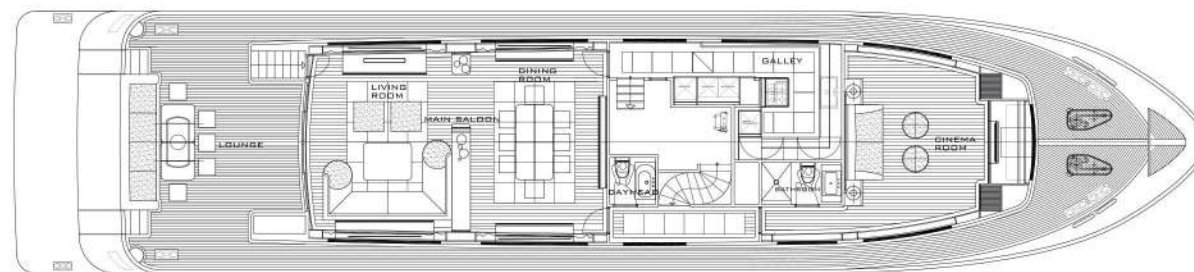
Built Year	2010
Model	Motor Yacht
Full Length	32 m.
Width	7,20 m.
Displacement	110 t.
Draft	1,80 m.
Fuel Capacity	7000 l.
Class	RINA
Water Capacity	2500 l.
Maximum Speed	18 knots
Generators	2xSole G35-T15
Construction	Wooden Epoxy
Exterior Cons.	Teak
Interior Cons.	Walnut
Engines	2 x 1140 MAN
	Bow Thruster
	Living Room
	Master Cabin
	VIP Cabin
	Owner Cabin
	2 x Guest Cabin
	3 x Crew Cabin
	Fly Bridge
	Tender
	Jet ski
	Winch
	Pasarella



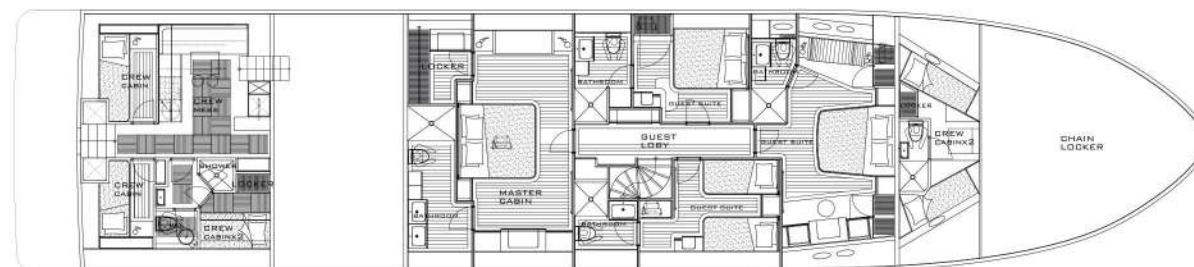
Profile



Upper Deck



Main Deck



Cabin Deck











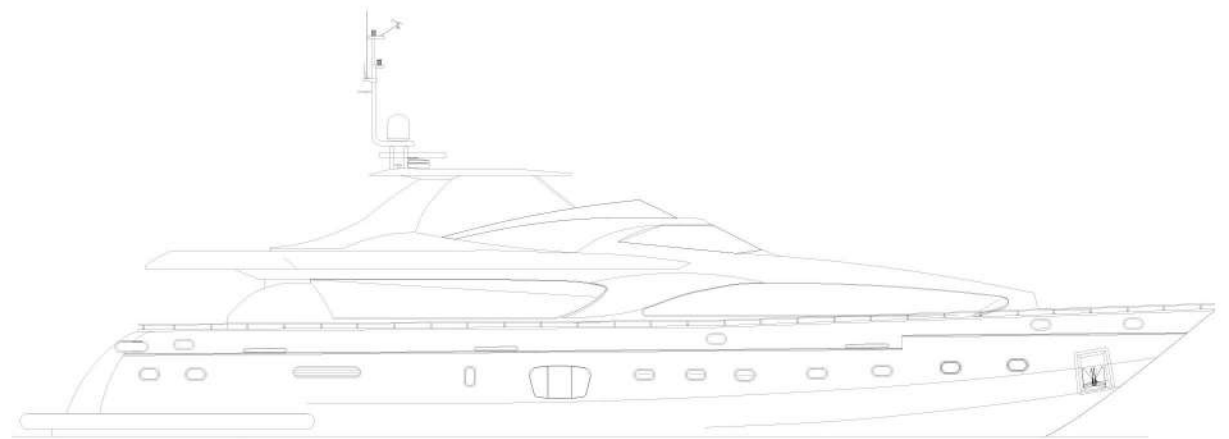




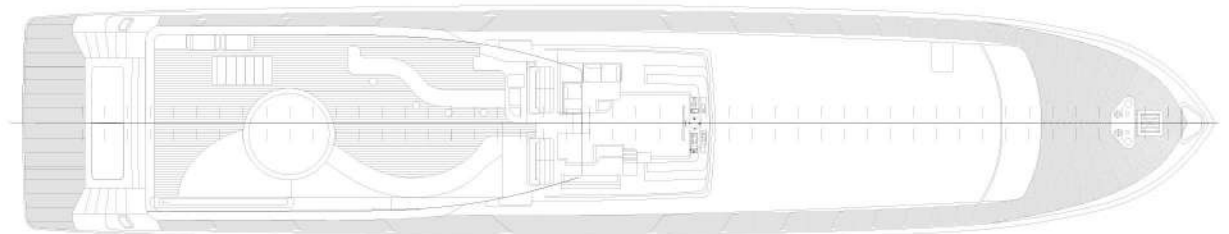


MERVE

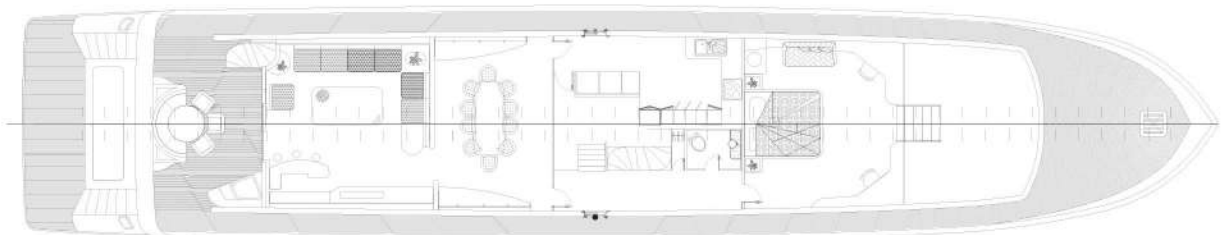
Built Year	2008
Model	Motor Yacht
Full Length	33,4 m.
Width	6,70 m.
Displacement	123 t.
Draft	1,80 m.
Fuel Capacity	12000 l.
Class	RINA
Water Capacity	3000 l.
Maximum Speed	24 knots
Generators	2x40 kva Onan
Construction	Wooden Epoxy
Exterior Cons.	Teak
Interior Cons.	Teak
Engines	2 x 2200 MTU
	Bow Thruster
	Salon
	Master Cabin
	VIP Cabin
	Owner Cabin
	2 x Guest Cabin
	3 x Crew Cabin
	Fly Bridge
	Tender
	Jet ski
	Vinç
	Pasarella



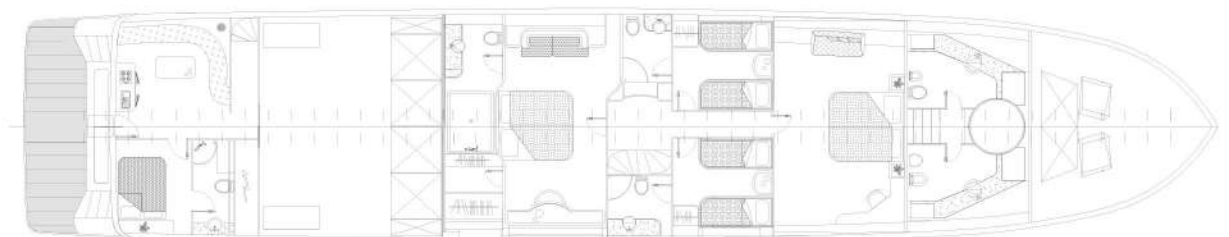
Profile



Upper Deck



Main Deck



Cabin Deck







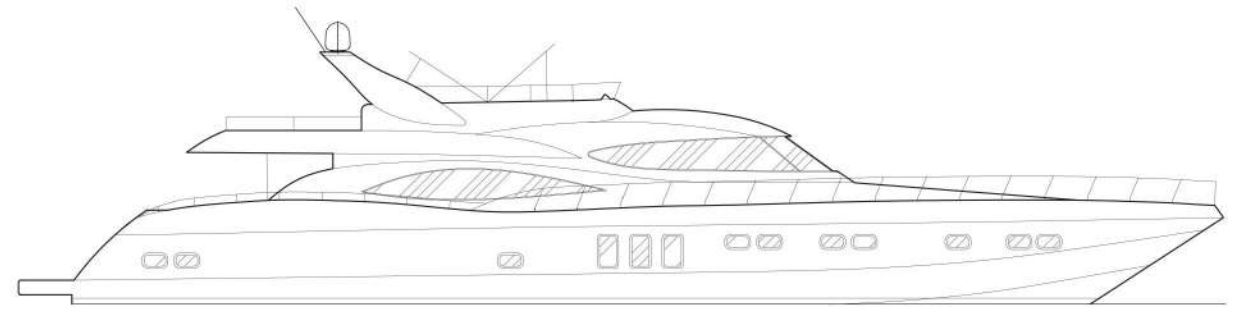




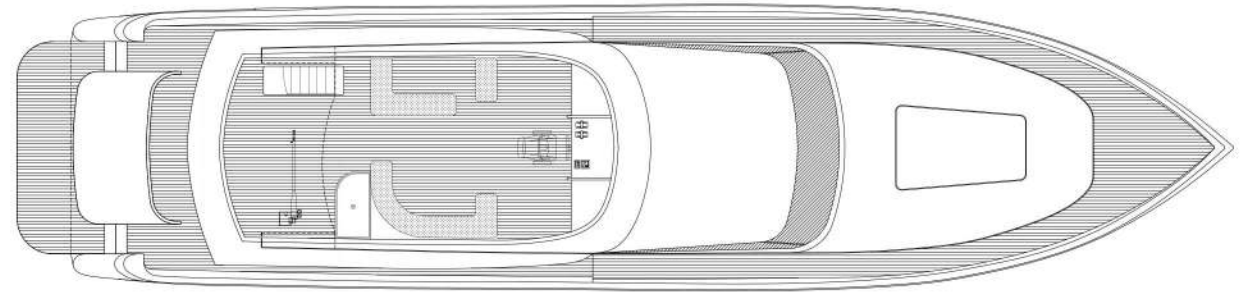


ASLAN
NECO

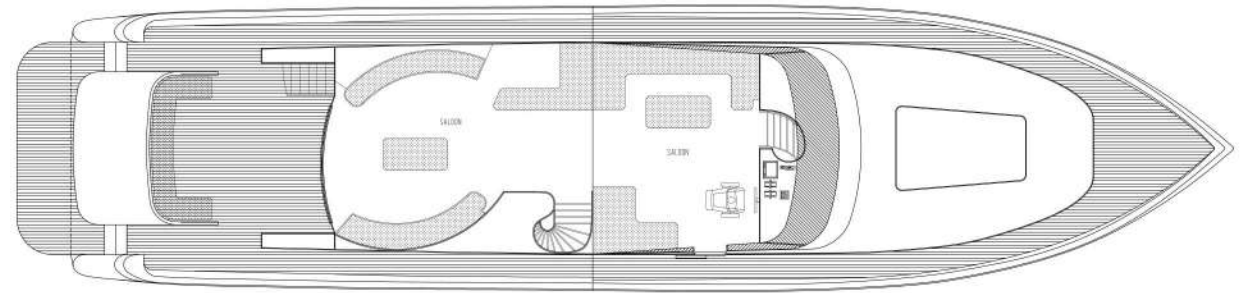
Built Year	2011
Model	Motor Yacht
Full Length	28 m.
Width	6,50 m.
Displacement	68 t.
Draft	1,3 m.
Fuel Capacity	8000 l.
Class	Türk Loydu
Water Capacity	2500 l.
Maximum Speed	25 knots
Generators	2x27,5 kva W
Construction	Wooden Epoxy
Exterior Cons.	Teak
Interior Cons.	Anigra
Engines	2 x 1100 Dawoo
	Bow Thruster
	Living Room
	Master Cabin
	VIP Cabin
	Owner Cabin
	2 x Guest Cabin
	3 x Crew Cabin
	Fly Bridge
	Tender
	Jet ski
	Winch
	Pasarella



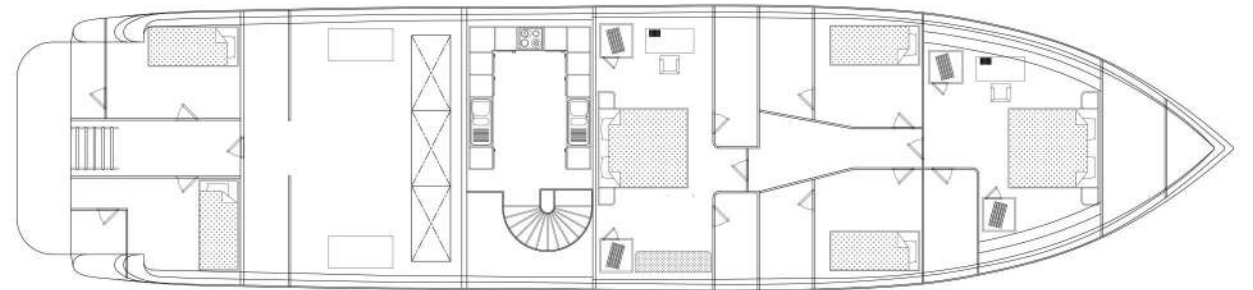
Profile



Upper Deck



Main Deck



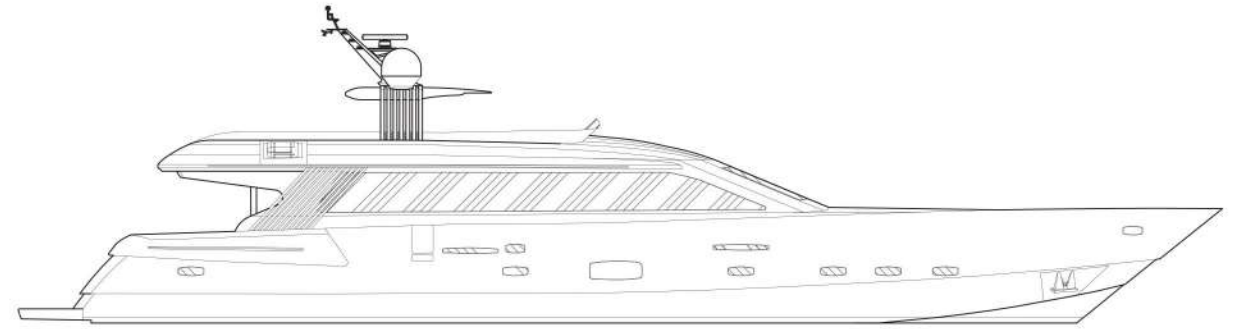
Cabin Deck



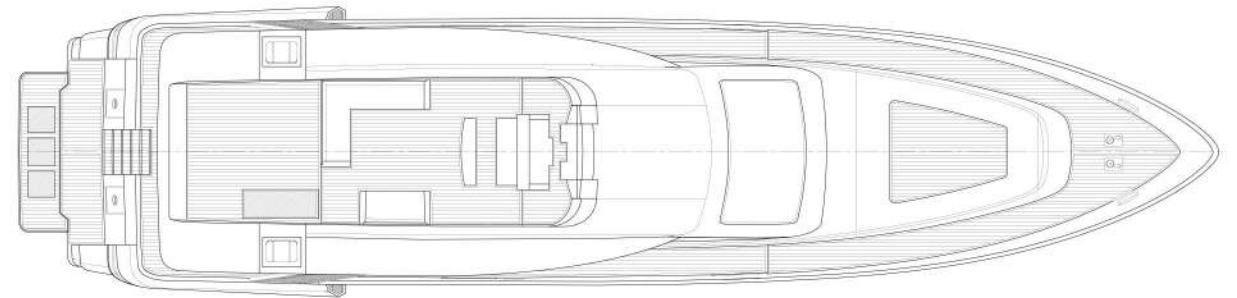




Built Year	2009
Model	Power Boat
Full Length	32 m.
Width	7,20 m.
Displacement	107 t.
Draft	1,42 m.
Fuel Capacity	14000 l.
Class	RINA
Water Capacity	2000 l.
Maximum Speed	29,3 knots
Generators	2x40 kva Onan
Construction	Wooden Epoxy
Exterior Cons.	Teak
Interior Cons.	Tropical Coating
Engines	2 x 2500 MTU
	Bow Thruster
	Living Room
	Master Cabin
	VIP Cabin
	Owner Cabin
	2 x Guest Cabin
	3 x Crew Cabin
	Fly Bridge
	Tender
	Jet ski
	Winch
	Pasarella



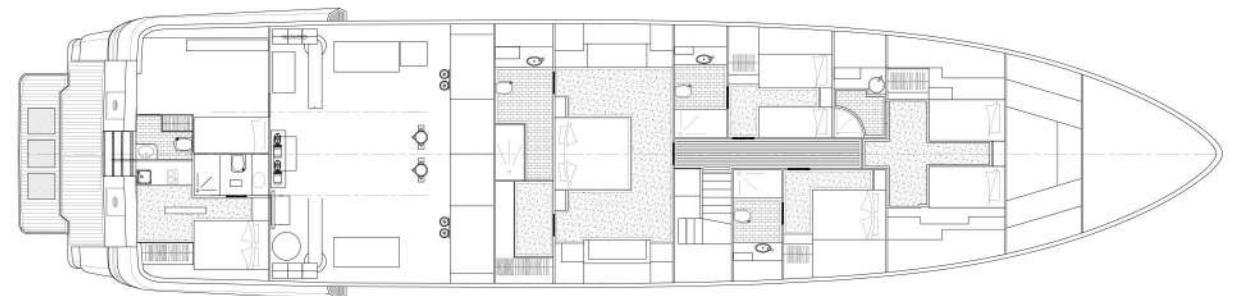
Profile



Upper Deck



Main Deck



Cabin Deck







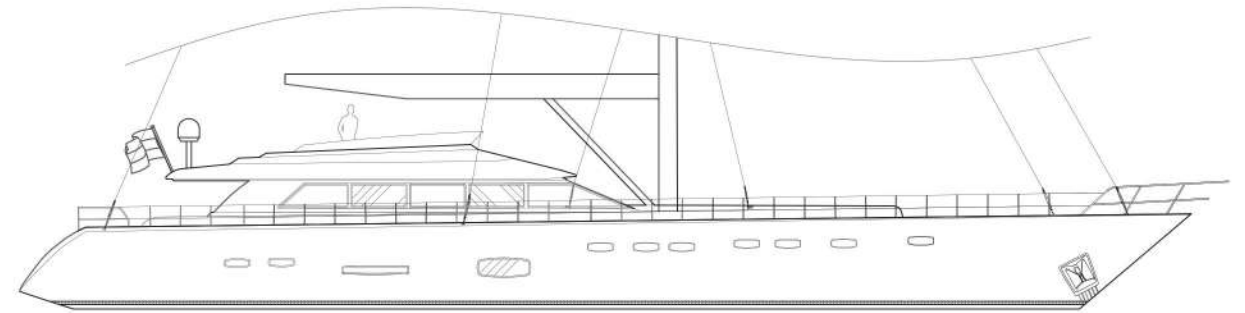




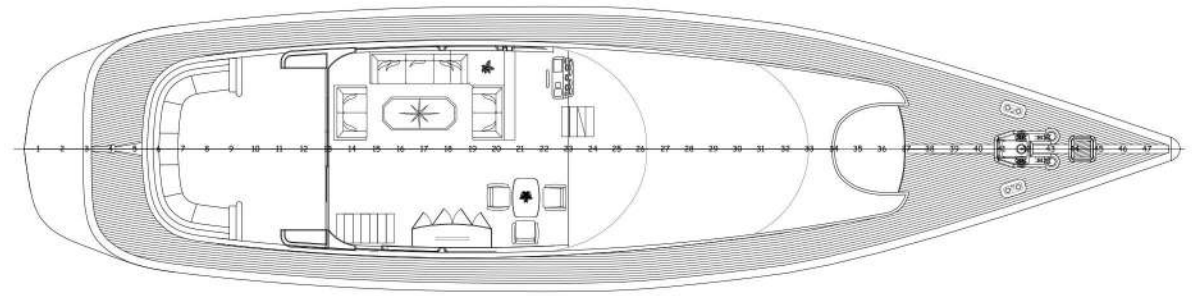




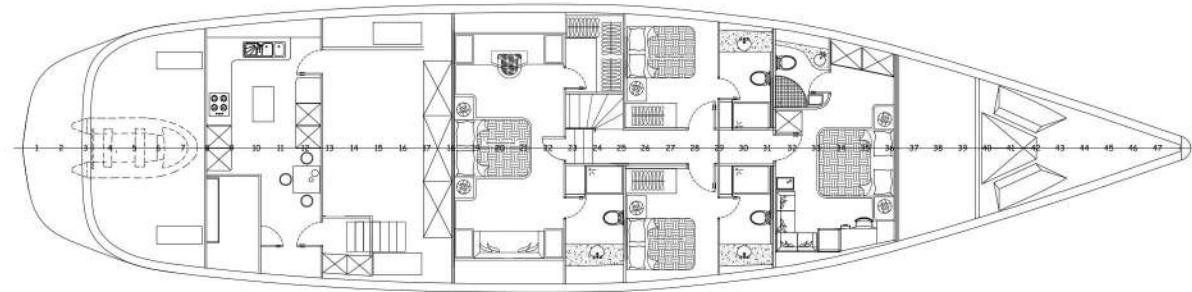
Built Year	2006
Model	Motor Sailer
Full Length	31,5 m.
Width	7,70 m.
Displacement	135 t.
Draft	3,56 m.
Fuel Capacity	6000 l.
Class	Türk Loydu
Water Capacity	2500 l.
Maximum Speed	18 knots
Generators	2x40 kva Onan
Construction	Wooden Epoxy
Exterior Cons.	Teak
Interior Cons.	Teak
Engines	2 x 550 MAN
	Bow Thruster
	Living Room
	Master Cabin
	VIP Cabin
	2 x Guest Cabin
	3 x Crew Cabin
	Tender
	Jet ski
	Winch
	Pasarella



Profile



Main Deck



Cabin Deck

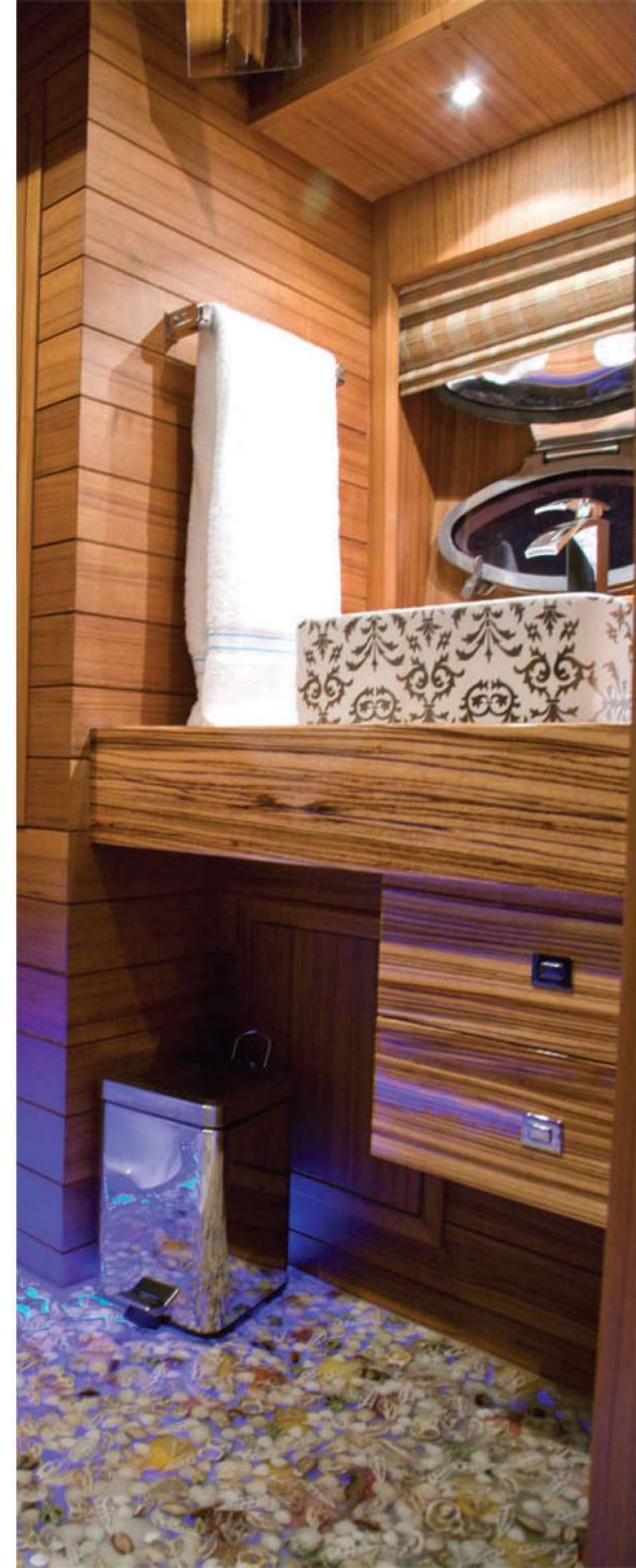








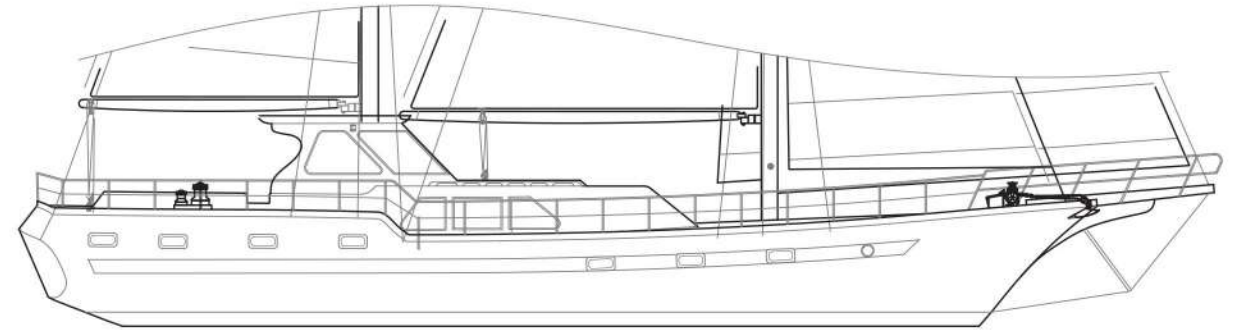




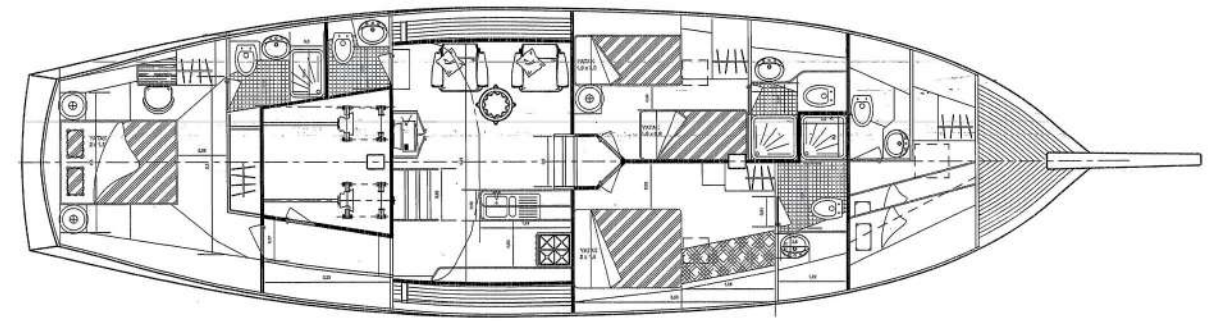




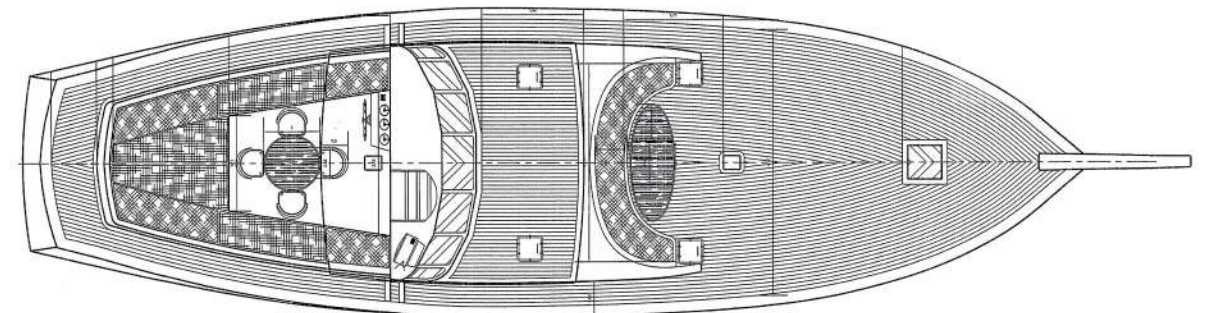
Built Year	2005
Model	Kecht
Full Length	21,5 m.
Width	5,60 m.
Displacement	55 t.
Draft	2,65 m.
Fuel Capacity	6000 l.
Class	Türk Loydu
Water Capacity	1200 l.
Maximum Speed	12 knots
Generator	11,5 kva Onan
Construction	Wooden Epoxy
Exterior Cons.	Teak
Interior Cons.	Ashen
Engines	350 Cummins
	Bow Thruster
	Living Room
	Master Cabin
	2 x Guest Cabin
	1 x Crew Cabin
	Tender
	Winch
	Pasarella



Profile



Main Deck



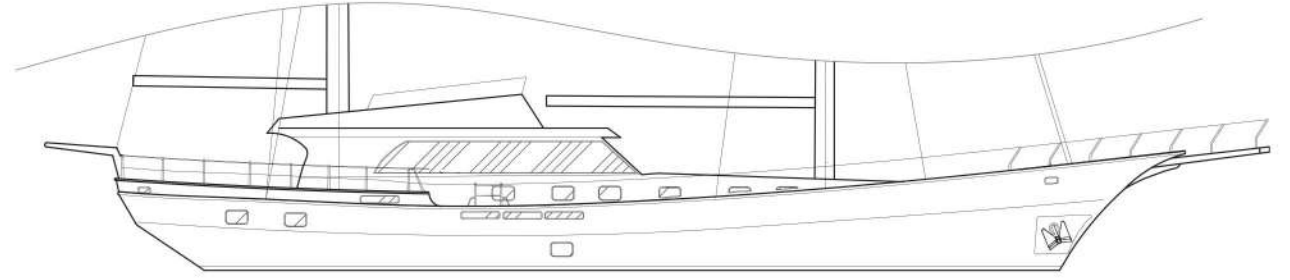
Cabin Deck



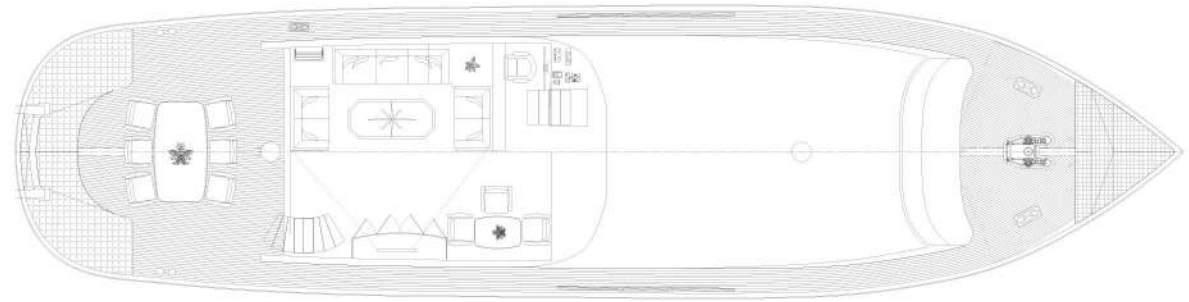




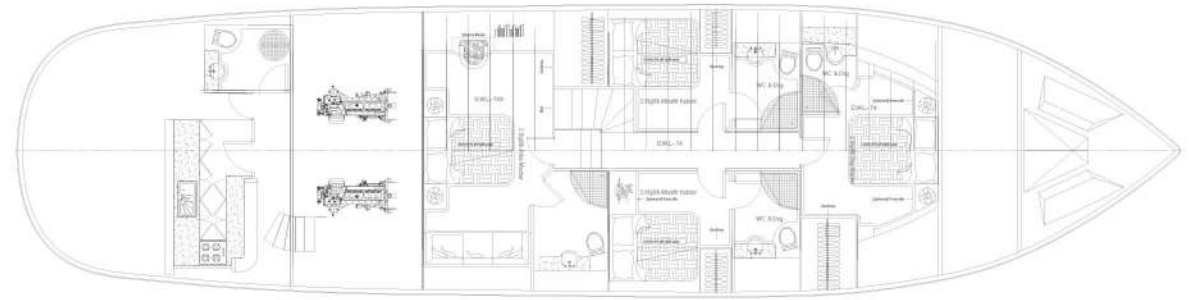
Built Year	2004
Model	Gulet
Full Length	27 m.
Width	6,60 m.
Displacement	80 t.
Draft	2,85 m.
Fuel Capacity	7000 l.
Class	Türk Loydu
Water Capacity	2000 l.
Maximum Speed	14 knots
Generator	2x30 kva Onan
Construction	Wooden Epoxy
Exterior Cons.	Teak
Interior Cons.	Cherry
Engines	2 x 450 MAN
	Bow Thruster
	Living Room
	Master Cabin
	VIP Cabin
	2 x Guest Cabin
	1 x Crew Cabin
	Tender
	Fly Bridge
	Winch
	Pasarella



Profile



Main Deck



Cabin Deck



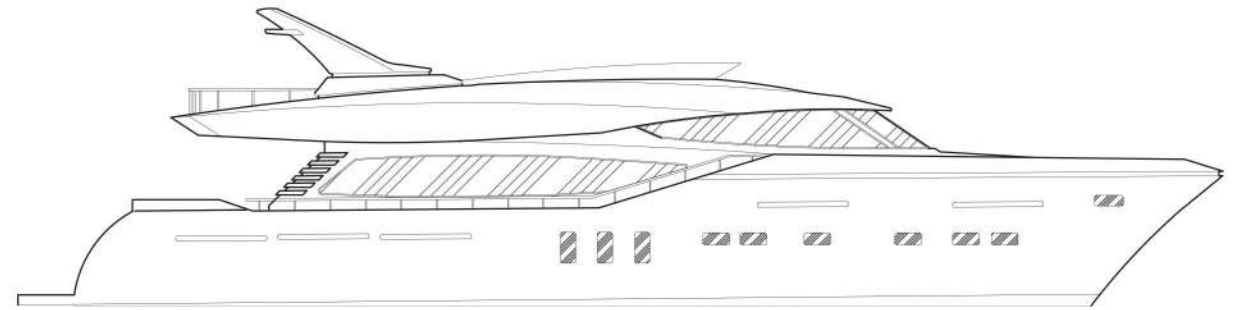




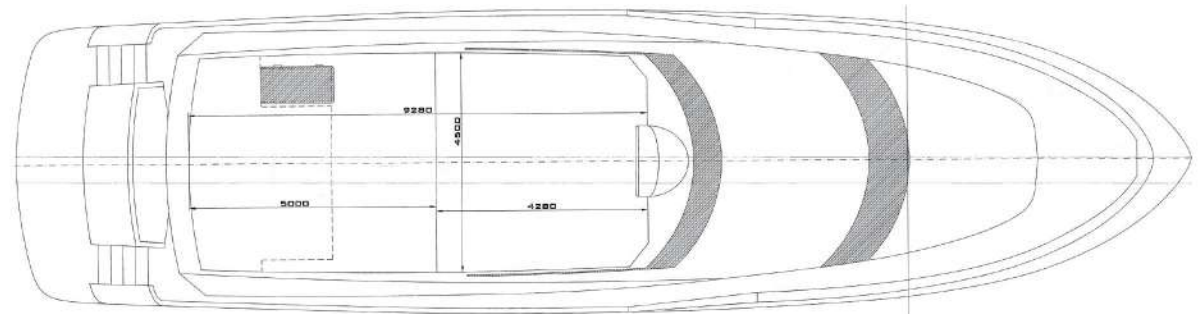


ANEMOS

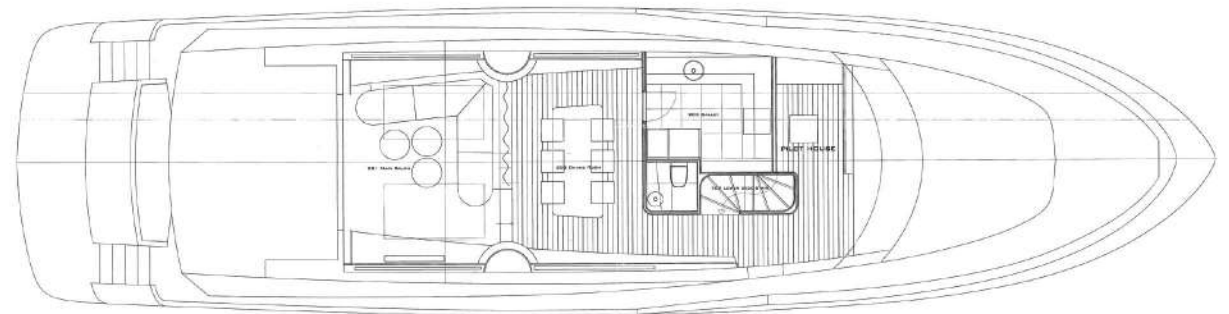
Built Year	2012
Model	Trawler
Full Length	24 m.
Width	6,20 m.
Displacement	85 t.
Draft	1,5 m.
Fuel Capacity	2 x 5700 l.
Class	CE
Water Capacity	2 x 3500 l.
Maximum Speed	18 knots
Generator	2x22,5 kva Onan
Construction	Wooden Epoxy
Exterior Cons.	Teak
Interior Cons.	Oak
Engines	2 x 455 HP Cummins
	Bow Thruster
	Living Room
	Master Cabin
	VIP Cabin
	2 x Guest Cabin
	2 x Crew Cabin
	Tender
	Jet Ski
	Fly Bridge
	Winch
	Pasarella



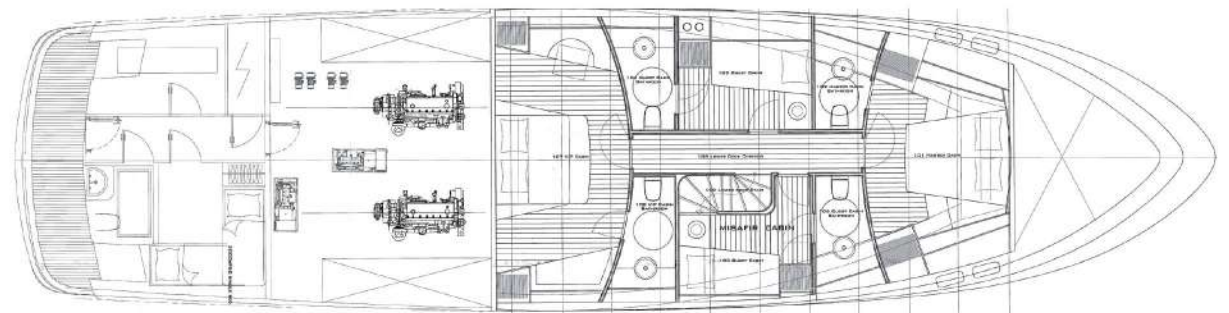
Profile



Upper Deck

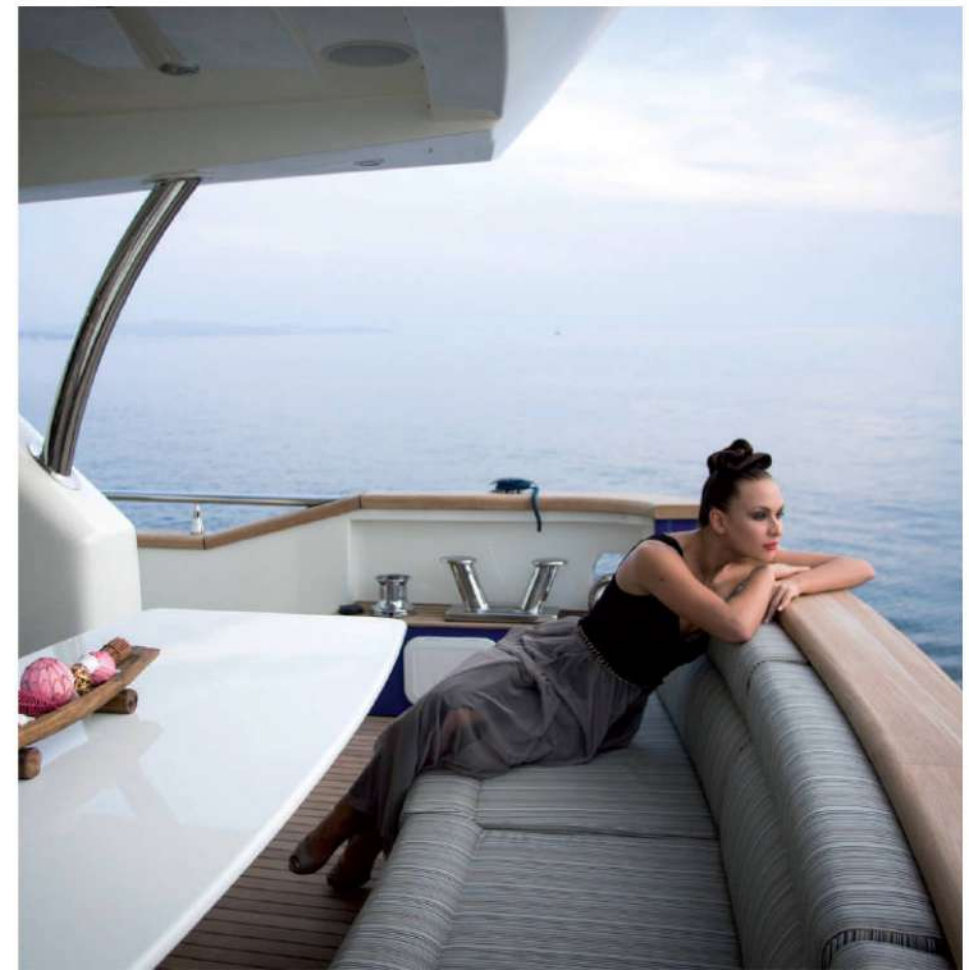
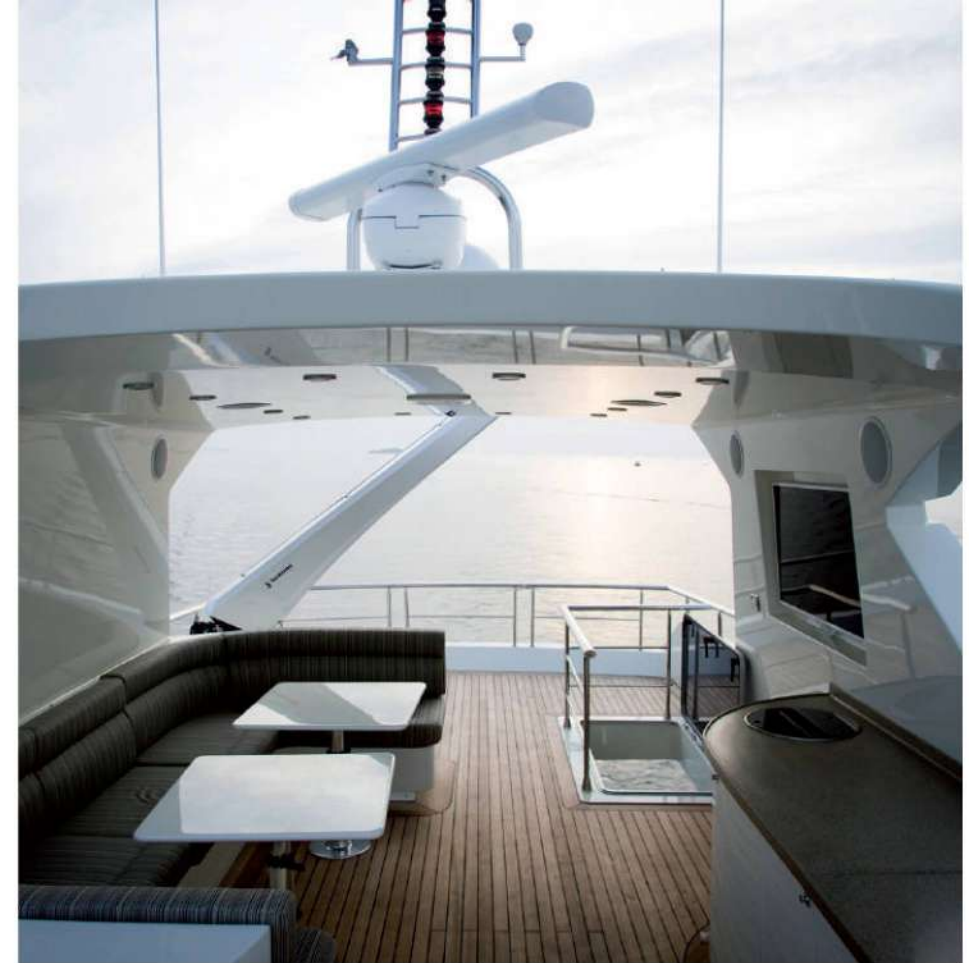


Main Deck



Cabin Deck



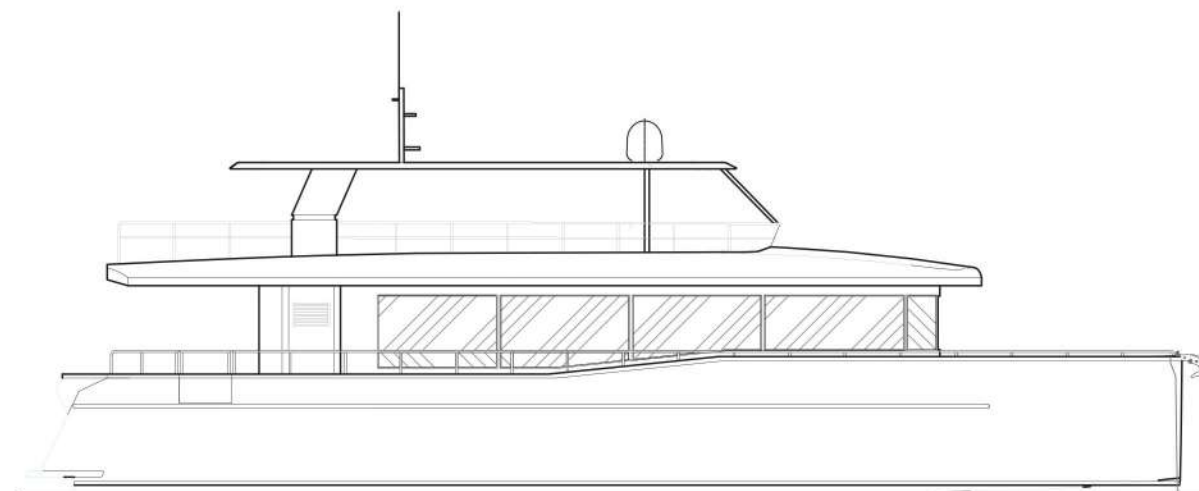




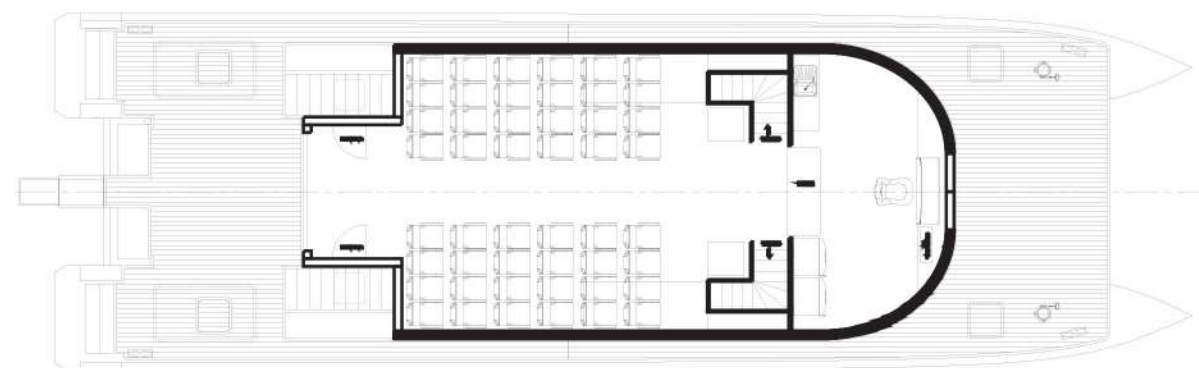


TOLKUN

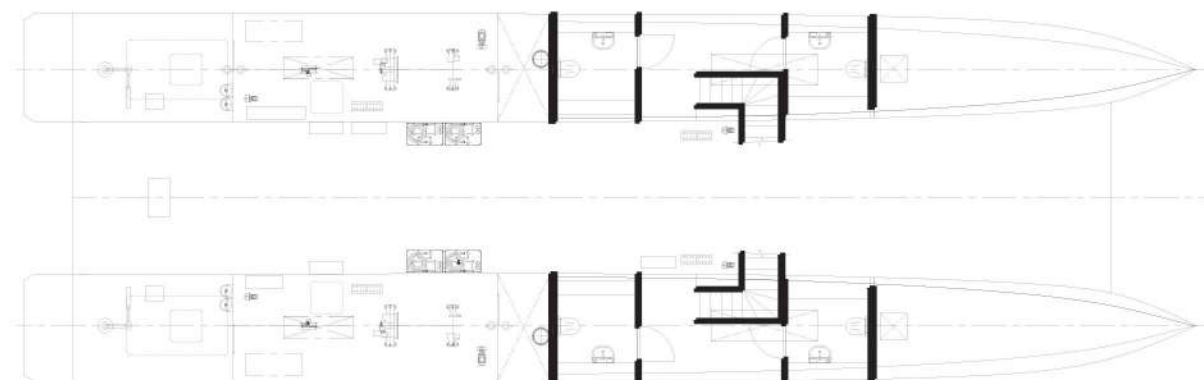
Built Year	2016
Model	Catamaran
Full Length	22 m.
Width	6,90 m.
Displacement	53,59 t.
Draft	1,5 m.
Fuel Capacity	3000 l.
Class	CE
Water Capacity	1500 l.
Maximum Speed	18 knots
Generator	2x22,5 kva Onan
Construction	Wooden Epoxy
Exterior Cons.	Teak
Interior Cons.	Oak
Engines	2 x 455 HP Volvo
	Bow Thruster
	Tender
	Fly Bridge
	Winch
	Pasarella



Profile



Main Deck



Cabin Deck



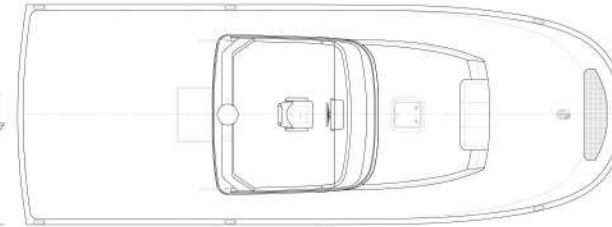




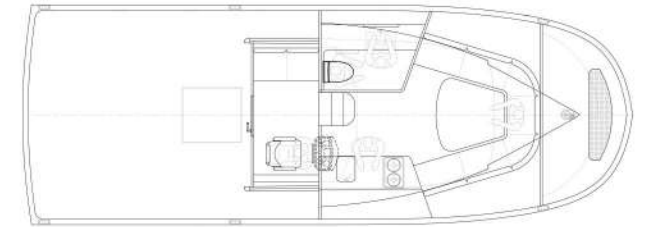
Built Year 2017
 Model Trawler
 Full Length 11 m.
 Width 4 m.
 Displacement 9 t.
 Draft 0,90 m.
 Fuel Capacity 1500 l.
 Class CE
 Water Capacity 700 l.
 Maximum Speed 12 knots
 Generator 13,5 kVaOnan
 Engines 230 hp Daweco
 Bow Thruster
 Side Power
 Windlass Lofrans 1000W
 Heater Webasto
 Sat Antenna Intellian
 Radar&Chart PlotterSIMRAD



Profile



Main Deck



Cabin Deck



TEKNE İSMİ	MODEL	TARİH	ŞAHİS	BOY
GÖNLÜM - 1	KECHT	1985	TUNCER CİNER	18 m.
ZEYNO	GULET	1986	FUAT MİRAS	23 m.
YASE	GULET	1987	YILMAZ AYANOĞLU	25 m.
SEFA 1	GULET	1989	MUSTAFA POYRAZ	26 m.
YILDIZ K	KECHT	1989	TURGUT KAPTANOĞLU	25 m.
EGE	TRAWLER	1993	ESAT EŞKAZAN	14 m.
RUMELİ	GULET	1997	SÜLEYMAN FİLET - HASAN BARUT	20 m.
A.MERVE	KECHT	1998	NECATİ ASLAN	25 m.
ORSA	TRAWLER	2000	AHMET HANEFİ	17 m.
EFFORT	MOTORYAT	2002	HÜRREM AYDIN	13 m.
CECOM 1	KECHT	2003	ALYA MURATOĞLU	20 m.
MERVE	GULET	2004	İNCE DENİZCİLİK	27 m.
CECOM 2	KECHT	2005	ALYA MURATOĞLU	21 m.
SİLVER K	MOTORSAILER	2006	KAPTANOĞLU HOLDİNG	32 m.
MARY	MOTORYAT	2008	İNCE DENİZCİLİK	33 m.
GOLDEN K	POWER BOAT	2009	KAPTANOĞLU HOLDİNG	32 m.
NUMBER ONE	LOBSTER	2009	VOLKAN DEMİREL (FB)	17 m.
TRUE STORY	MOTORYAT	2010	İLHAN KARADENİZ	32 m.
ASLAN NECO	MOTORYAT	2011	NECATİ ASLAN	28 m.
ANEMOS	TRAWLER	2012	VEYSEL VARDAL	24 m.
HARUN	MOTORYAT	2015	AYFİRA İNŞAAT	37 m.
TOLGUN	CATAMARAN	2016	MSA DENİZCİLİK	22 m.
DEMİR	TRAWLER	2017	GÜVEN KEPÇE	11 m.
VAGANTE	GULET	2018	TANJU KALAYCIOĞLU	30 m.



Evliya Çelebi Mah. Tershaneler Cad. Gani Sok. Nuh San. Sit. A Blok No:3 Tuzla - İstanbul - TURKEY
Tel: +90 216 395 29 30 · Fax: +90 216 446 68 48
info@huzuryat.com.tr · www.huzuryat.com.tr